

Product Description:

The Diamond Series provides excellent lighting and also delivers a unique and elegant design. The luminaire is light in weight and provides high cost performance. No lead or mercury is used in creating the fixture, making it a versatile choice and friendly to the environment. In its solid-state, the luminaire is resistant to High-Shock and High-Vibration.

Features:

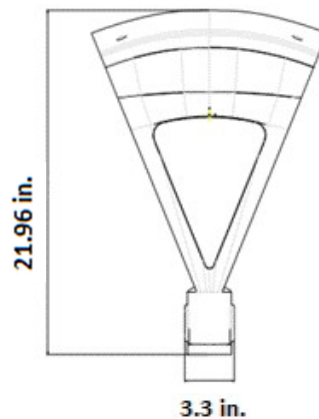
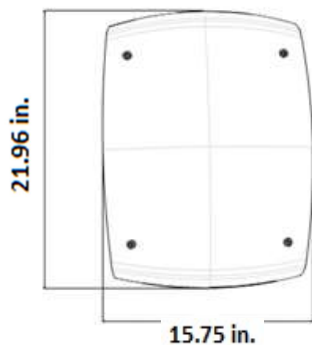
- **Application:** pedestrian streets, factories, schools, gardens, courtyards, hotels, parking lots, public parks, etc.
- **Lens:** Different precision refractive optical lens designed for various applications.
- **Warranty:** 5 Years
- **LED Driver:** Meanwell
- **LED Source:** Samsung
- **Certifications:** ETL
- **Working Temperature:** -40°F ~ 149°F
- **Color Temperature:** 3000K-7000K
- DIALUX simulation design available
- 3.3 in. inside diameter



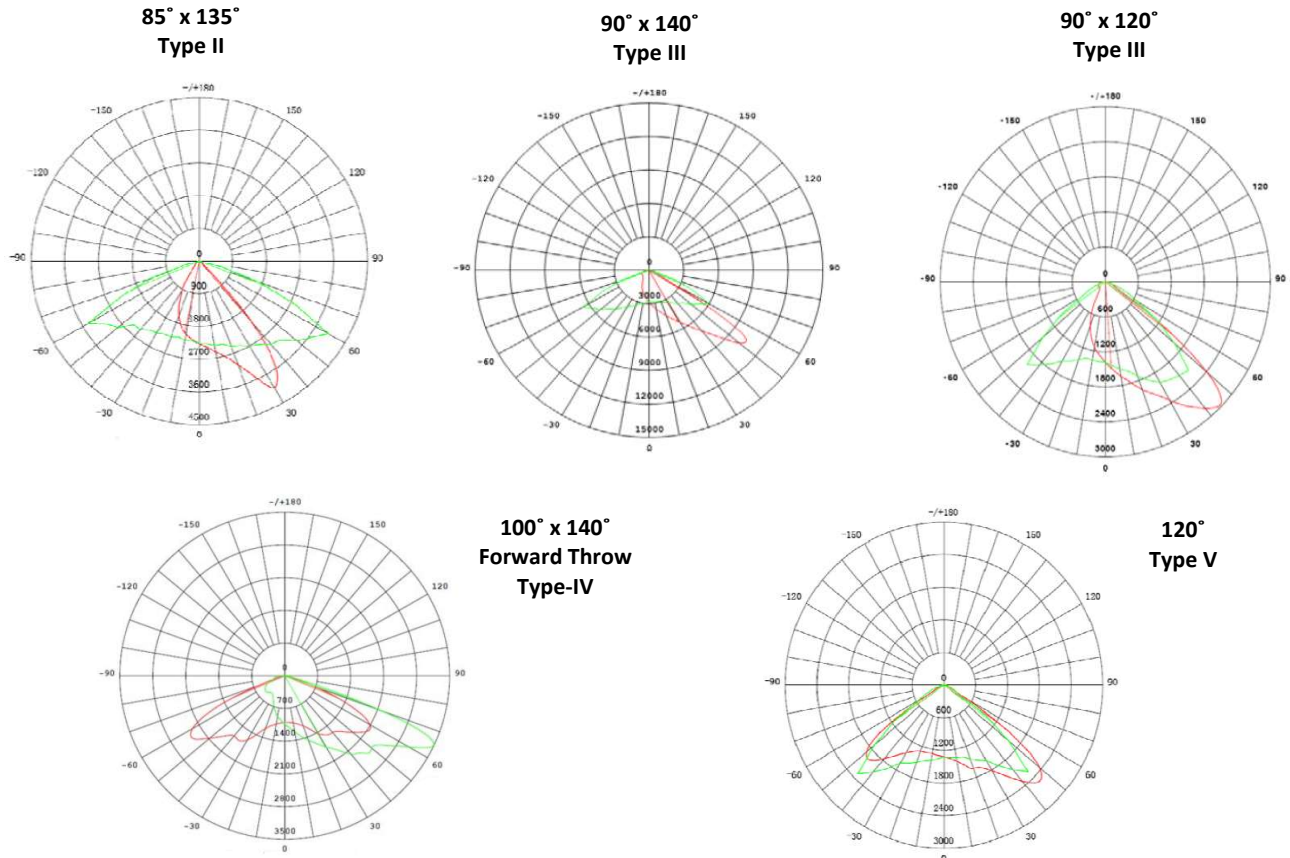
Technical Data:

Certifications	ETL
CRI	≥ 70
IP Rating	IP65
Power Factor	> 0.93
Input Voltage	120-277V, 480V

Product Dimensions:



Light Distribution:



Specifications:

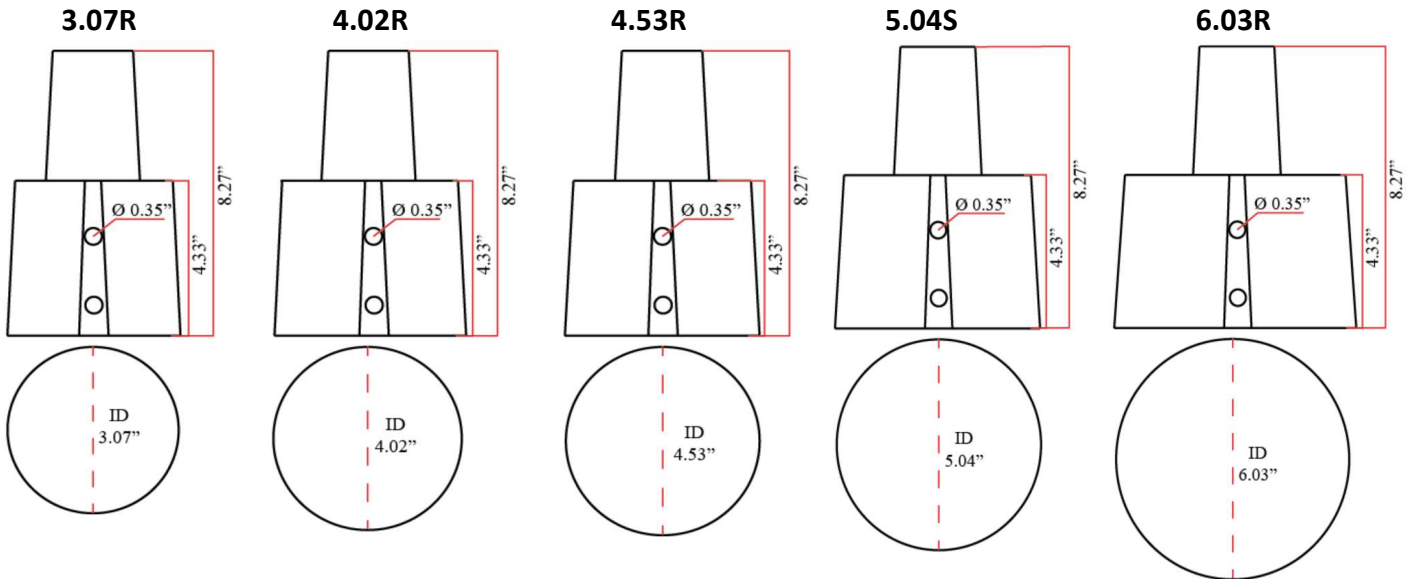
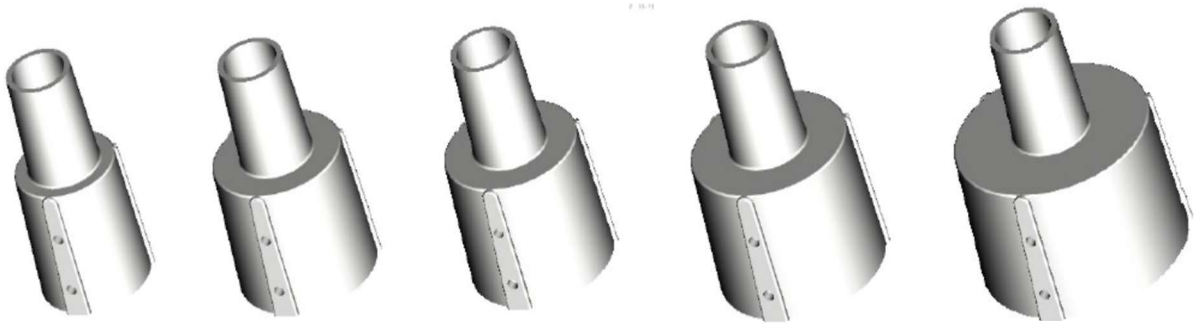
Fixture Model	Lumens	Efficacy (lm/w)	Dimensions (inches)	Weight (lbs)	Beam Angle
DIAMOND-35W	3,500	100	21.96 X 15.74 X 21.96	34.17	Type II: 85° x 135° Type III: 90° x 140° Type III: 90° x 120° Type IV: 100° x 140° Type V: 120°
DIAMOND-50W	5,950	119			
DIAMOND-100W	12,000	120			
DIAMOND-150W	15,500	103			
DIAMOND-200W	20,862	104			
DIAMOND-300W	35,248	117			

Ordering Guide:

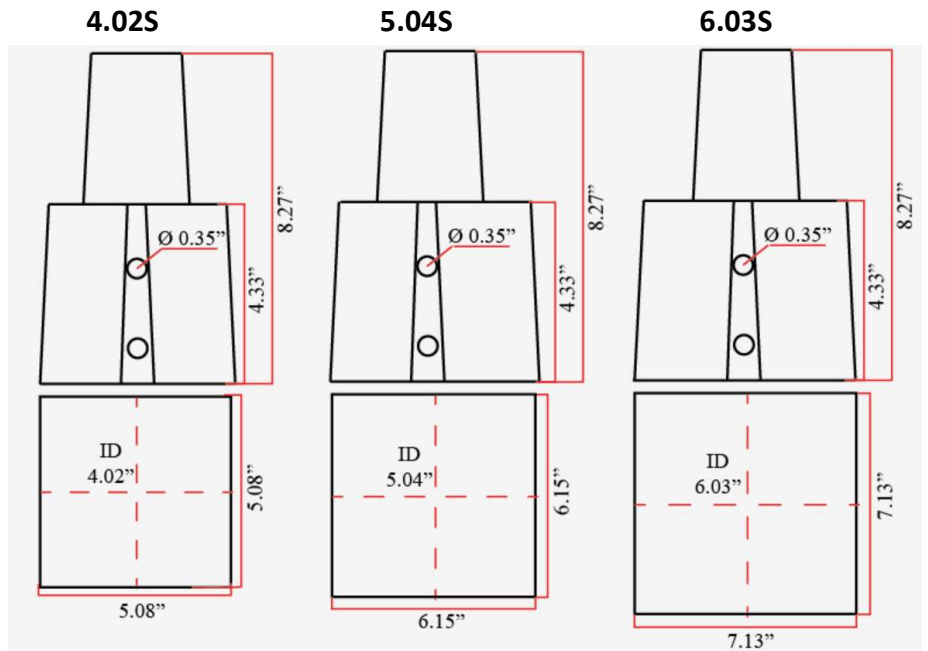
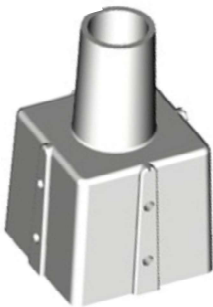
DIAMOND-50W	120-277V	BL	40K	90° x	[3.07R]
Wattage: 35W 50W 100W 150W 200W 300W	Voltage: 120-277V 480V	Color: BL: Black	Color Temperature: 30K 40K 50K	Beam Angle: 85° x 135° 90° x 140° 90° x 120° 100° x 140° 120°	[PC]: Photocell (button style) Optional Pole Reducer Inside Measurements: Square (LxW) Round Ø [4.02S]: 4.02 in [3.07R]: 3.07 in [5.04S]: 5.04 in [4.02R]: 4.02 in [6.03S]: 6.03 in [4.53R]: 4.53 in [5.04R]: 5.04 in [6.03R]: 6.03 in

Pole Reducer Information

For Round Pole:



For Square Pole:



* SCREW SIZE: M8