

AG ALL GREEN LIGHTING, INC.

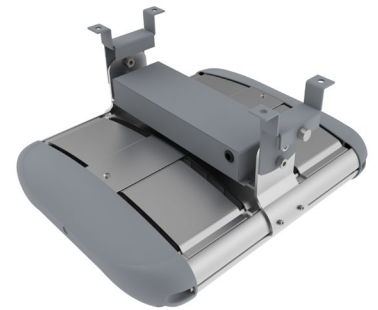
ORION Series

Applications:

The ORION high bay series can be used in various applications such as warehouses, manufacturing facilities, convention centers, sporting arenas, retail stores, gymnasiums, etc. This luminaire can withstand strong winds and low temperatures of -49°F and is built with die-cast marine grade aluminum. This luminaire has a life span of over 100,000 calculated hours and is available in a variety of mounting options, beam angles, and wattages for specific user needs.

Features:

- **Application:** LED High Bay / LED Flood Light
- **Warranty:** 5 Years
- **LED Driver:** Sosen / Inventronics
- **LED Chips:** Philips Lumileds 3030 / Cree
- **Operating Temperature:** -49°F ~ 122°F
- **Housing Material:** Aluminum Alloy with Corrosive resistant polyester powder coat finish



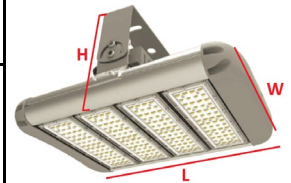
Surface Mount

Technical Data:

Certifications	ETL
CRI	≥ 80
IP Rating	IP66, IK10
CCT	2500-5500K
Input Voltage	100-277V / 347- 480V

Specifications:

Fixture Model	Total Lumens (5000K / 140°)	Module Qty (75W / module)	Dimensions (inches - L x W x H)	Weight (lbs)
ORION-75W	10,497 lm	1	8.4" L x 14.4" W X 8.9" H	11.9
ORION-100W	15,494 lm	2	12.1" L x 14.4" W X 8.9" H	14.3
ORION-150W	21,289 lm			
ORION-200W	29,293 lm	3	15.8" L x 14.4" W X 8.9" H	16.5
ORION-240W	33,482 lm			
ORION-300W	42,455 lm	4	19.5" L x 14.4" W X 8.9" H	17.4
ORION-450W	63,682 lm	6	26.9" L x 14.4" W X 8.9" H	32.6

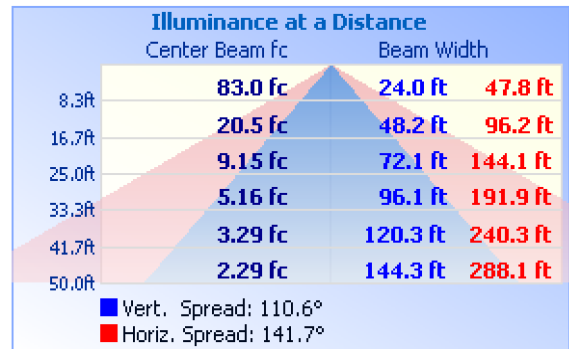
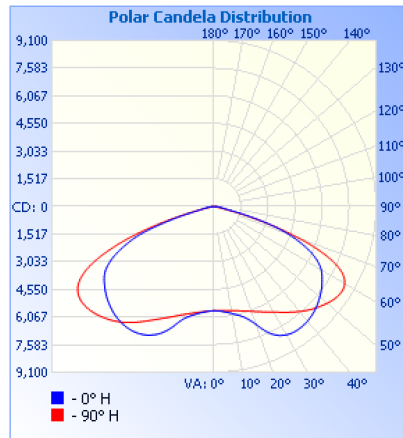


Lumen Chart:






CCT: 50K	T5	T5	T5	T5	T5	T5	T1 VS	T1 VS	T2 S	T3 S	T3 S	T3 M	T4 VS
	25°	30°	60°	90°	110°	140°	60x100°	90x145°	70x130°	80x150°	80x145°	80x150°	85x125°
ORION-75W	10,297	10,554	10,478	10,611	10,281	10,497	10,438	10,325	10,279	9,969	9,901	9,904	10,178
ORION-100W	15,394	15,504	15,392	15,546	15,401	15,494	15,498	15,446	15,315	14,904	14,792	14,796	14,799
ORION-150W	20,998	21,381	20,979	21,297	20,992	21,289	21,233	21,146	20,997	20,403	20,250	20,241	20,245
ORION-200W	28,998	29,420	28,951	29,390	28,969	29,293	29,301	29,118	28,976	27,952	27,803	27,730	27,797
ORION-240W	32,884	33,597	32,888	33,593	32,879	33,482	33,345	33,107	32,887	31,921	31,668	31,668	31,688
ORION-300W	41,993	42,601	41,998	42,596	41,987	42,455	42,314	42,277	41,997	40,796	40,471	40,503	40,561
ORION-450W	62,989	63,902	62,997	63,468	62,980	63,682	63,472	63,416	62,786	61,193	60,707	60,755	60,436

Photometrics:

ORION-240W 50K - 140°



Ordering Guide:

ORION-240W	100-277V	GR	SM	40K	140° x 140°	
Wattage: 75W 100W 150W 200W 240W 300W 450W	Voltage: 100-277V 347-480V	Color: GR: Gray (RAL 7045) BR: Bronze (RAL 8019) BL: Black	Mount: YM: Yoke Mount YM+HR: Yoke + Hanging Ring  180YM: 180° Vertical Yoke  360YM: 360° Vertical Yoke  YM+SF: Yoke + Slipfitter  SM: Surface Mount Brackets 	CCT: 30K 40K 50K 60K	Beam Angles: Type I 60° x 100° - T1 VS 90° x 145° - T1 VS Type II 70° x 130° - T2 S Type III 80° x 150° - T3 M 80° x 150° - T3 S 80° x 145° - T3 S Type IV 85° x 125° - T4 VS Type V 25° x 25° - T5 30° x 30° - T5 60° x 60° - T5 90° x 90° - T5 110° x 110° - T5 140° x 140° - T5	Optional Accessories: DM: Dimmable MS: Motion Sensor PC: Photocell EM: Emergency Battery (40W for 90 min)