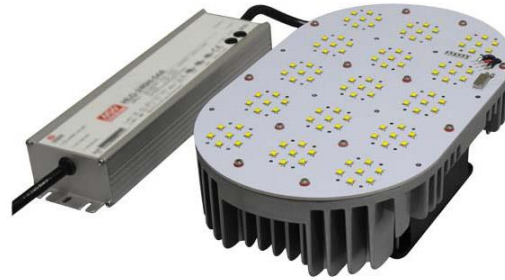


# AG ALL GREEN LIGHTING, INC.

## SATURN Series



35W - 45W - 60W



45W ~ 400W


### FEATURES

Application:	LED Retrofit Kit
LED Source:	Cree
Warranty:	5 years
Long life:	50,000+ hours at L70 standards
CRI:	>70
IP Rating:	IP65
Working Temp:	-22°F ~ +131°F
Lab Tested:	National listing lab test in accordance with IES Standards
Solid-State:	High-Shock and High-Vibration Resistant
Instant-On:	Instant-On and Instant Re-strike

### SPECIFICATIONS

Fixture Model	Wattage	Total Lumens	Metal Halide Replacement	Efficacy (Lm/W)	Dimensions (inch)	Weight (lbs)	Certs	Beam Angle
SATURN-35W	35W	3300 lm	80W MH	>95	(10~11.6) x 6 x 2.4	3.5	UL	120°
SATURN-45W	45W	4790 lm	100W MH	>105	(10~11.6) x 6 x 2.4	3.5	UL / DLC	120°
SATURN-60W	60W	6641 lm	175W MH	>100	(10~11.6) x 6 x 2.4	4.0	UL / DLC	120°
SATURN-80W	80W	9900 lm	250W MH	>105	(10~11.6) x 6 x 2.4	4.2	UL	120°
SATURN-100W	100W	11695 lm	350W MH	>105	(10~11.6) x 6 x 2.4	4.9	UL / DLC	120°
SATURN-120W	120W	15057 lm	400W MH	>100	(10~11.6) x 6 x 2.4	5.1	UL / DLC	120°
SATURN-150W	150W	18709 lm	500W MH	>90	(13.8~14.6) x 7.2 x 3.4	5.1	UL / DLC	120°
SATURN-200W	200W	21243 lm	600W MH	>90	(13.8~14.6) x 7.2 x 3.4	5.1	UL	120°
SATURN-240W	240W	28013 lm	750W MH	>90	(13.8~14.6) x 7.2 x 3.4	6.0	UL / DLC	120°
SATURN-320W	320W	32000 lm	900W MH	>90	(16.2~18.2) x 10.2 x 3.6	8.4	UL	120°
SATURN-400W	400W	41110 lm	1000W MH	>90	(16.2~18.2) x 10.2 x 3.6	9.3	UL	120°

### ORDERING INFORMATION

Model	Wattage	Input Voltage	Mounting	Color Temperature	Body Type	Beam Angle
<b>SATURN</b>	<b>45W</b>	<b>100 - 277V</b>	<b>Screw Base</b>	<b>5K</b>	<b>R</b>	<b>120°</b>
	35W	120W	Screw Base	27K: 2700K	R: Round	120°
	45W	150W		40K: 4000K	(35W - 60W)	
	60W	200W		45K: 4500K	O: Oval	
	80W	240W		50K: 5000K	(45W ~ 400W)	
	100W	320W	Direct Mounting	57K: 5700K		
	400W		